

Rittal – The System.

Faster – better – everywhere.

COMPACT ENCLOSURES AX

Technical details



ENCLOSURES

POWER DISTRIBUTION

CLIMATE CONTROL

IT INFRASTRUCTURE

SOFTWARE & SERVICES



FRIEDHELM LOH GROUP

Compact enclosures

Contents

Compact enclosures AX, sheet steel

Basic enclosure AX

Model No. AX	Width mm	Height mm	Depth mm	Cam lock	3-point locking system	Page
1031.000	380	300	210	1	-	4-5
1033.000	300	300	210	1	-	4-5
1034.000	300	400	210	1	-	4-5
1037.000	400	800	300	2	-	4-5
1038.000	380	600	210	2	-	4-5
1039.000	600	380	210	1	-	4-5
1045.000	400	500	210	2	-	4-5
1050.000	500	500	210	2	-	4-5
1054.000	600	600	250	2	-	4-5
1055.000	800	600	300	2	-	6-7
1057.000	500	700	250	2	-	4-5
1058.000	600	800	250	2	-	4-5
1059.000	600	800	400	2	-	4-5
1060.000	600	600	210	2	-	4-5
1073.000	760	760	300	2	-	6-7
1076.000	600	760	210	2	-	4-5
1077.000	760	760	210	2	-	6-7
1090.000	600	1000	250	2	-	4-5
1091.000	600	1000	400	2	-	4-5
1100.000	1000	760	210	2	-	12-13
1110.000	1000	1000	300	2	-	12-13
1114.000	1000	1,400	300	-	■	14-15
1115.000	1000	1,400	400	-	■	14-15
1116.000	1200	1200	400	-	■	14-15
1130.000	1000	760	300	2	-	12-13
1180.000	800	1000	300	2	-	6-7
1181.000	800	1000	400	2	-	6-7
1213.000	1000	1200	300	-	■	14-15
1214.000	1000	1200	400	-	■	14-15
1260.000	600	1200	300	-	■	8-9
1261.000	600	1200	400	-	■	8-9
1280.000	800	1200	300	-	■	10-11
1281.000	800	1200	400	-	■	10-11
1338.000	380	600	350	2	-	4-5
1339.000	600	380	350	1	-	4-5
1350.000	500	500	300	2	-	4-5
1360.000	600	600	350	2	-	4-5
1376.000	600	760	350	2	-	4-5
1380.000	380	380	210	1	-	4-5

Wall-mounted enclosure AX IT with 482.6 mm (19") mounting angles

Model No. AX	Width mm	Height mm	Depth mm	Page
7641.350	600	380	350	20
7643.350	600	600	350	20
7645.350	600	760	350	20
7646.400	600	800	400	20

Command panel AX with handle strips

Model No. AX	Width mm	Height mm	Depth mm	Page
6315.150	300	300	210	21
6315.250	380	300	210	21
6315.350	380	380	210	21
6315.450	500	500	210	21
6315.650	600	600	210	21
6320.050	300	200	155	22
6320.350	380	380	210	22
6320.450	500	500	210	22
6320.550	600	380	210	22
6320.650	600	600	210	22

Command panel AX for desktop TFT up to 24"

Model No. AX	Width mm	Height mm	Depth mm	Page
6321.050	650	450	155	23

Compact enclosures AX, stainless steel

Basic enclosure AX

Model No. AX	Width mm	Height mm	Depth mm	Cam lock	3-point locking system	Page
1003.000	300	300	210	1	-	16-17
1005.000	300	380	210	1	-	16-17
1006.000	380	380	210	1	-	16-17
1007.000	500	500	210	2	-	16-17
1008.000	380	600	210	2	-	16-17
1009.000	600	380	210	1	-	16-17
1010.000	600	600	210	2	-	16-17
1011.000	380	300	210	1	-	16-17
1012.000	600	760	210	2	-	16-17
1013.000	500	500	300	2	-	16-17

Model No. AX	Width mm	Height mm	Depth mm	Cam lock	3-point locking system	Page
1014.000	760	760	300	2	-	16-17
1015.000	400	500	210	2	-	16-17
1016.000	800	1000	300	2	-	16-17
1017.000	800	1200	300	-	■	18
1018.000	1000	1000	300	2	-	19
1019.000	1000	1200	300	-	■	19
1302.000	300	380	210	1	-	16-17
1303.000	380	380	210	1	-	16-17
1304.000	600	600	210	2	-	16-17
1305.000	1000	1200	300	-	■	19

Compact enclosures



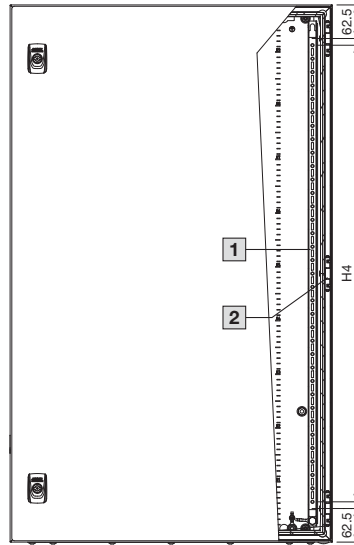
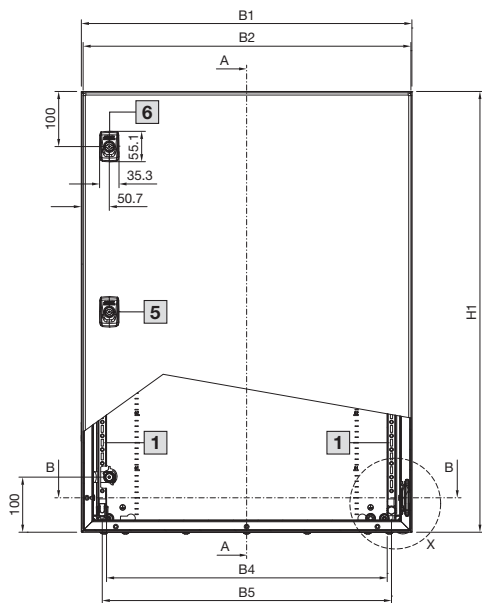
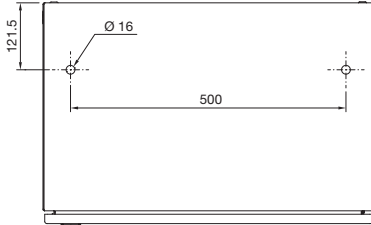
Compact enclosures

Compact enclosures AX, sheet steel

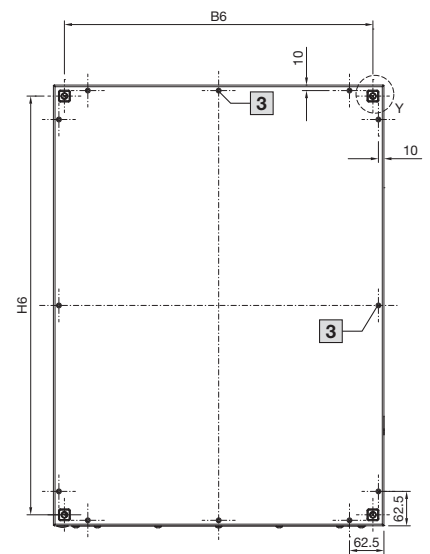
Basic enclosure AX

with cam lock and one gland plate

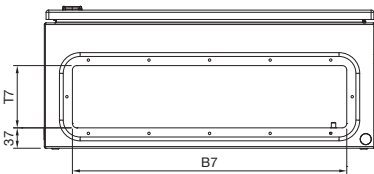
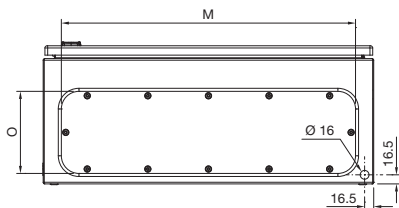
Drilled holes for eyebolts
(only for 1059.000/1091.000)



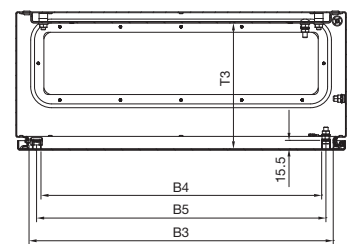
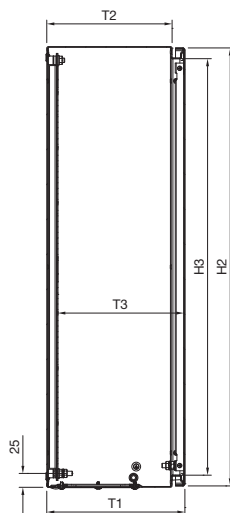
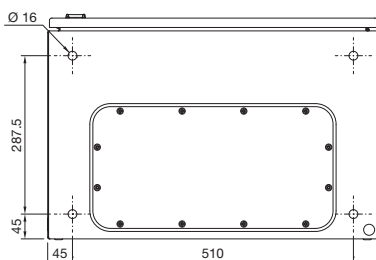
Section A - A



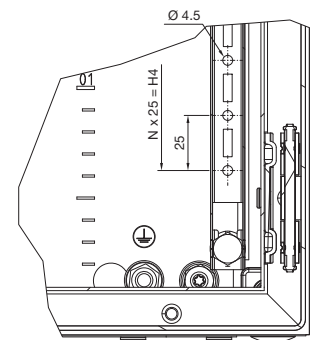
Section B - B



Drilled holes for base/plinth
(only for 1059.000/1091.000)



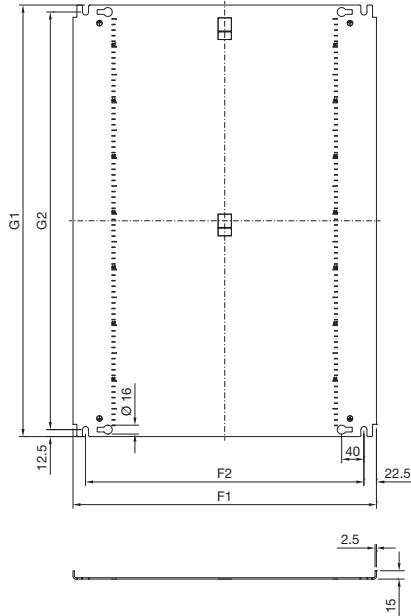
Detail X



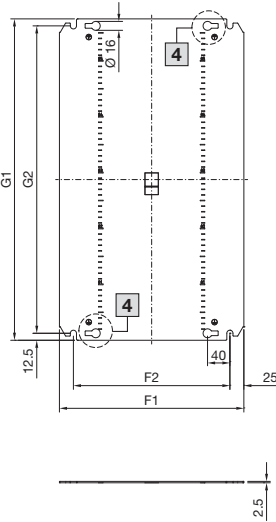
- 1 Door interior view
- 2 Central hinge, only where $H1 > 800$ mm
- 3 Central embossed half-shear, only where $B1/H1 \geq 500$ mm
- 4 Not applicable to $B1 = 300$ mm
- 5 One central cam where $H1 \leq 400$ mm
- 6 Two cams where $H1 > 400$ mm

Basic enclosure AX with cam lock and one gland plate

Mounting plate type 1,
with edge fold



Mounting plate type 2,
without edge fold



Enclosure

- B1 = Enclosure width (overall width)
- B2 = Door width
- B3 = Clearance width, enclosure opening
- B4 = Clearance width between door profile strips
- B5 = Mounting distance, door profile strips
- B6 = Mounting distance, enclosures
- B7 = Gland plate opening
- H1 = Enclosure height (overall height)
- H2 = Door height
- H3 = Clearance height, enclosure opening
- H4 = Overall height, 25 mm pitch pattern of holes
- H6 = Mounting distance, enclosures
- N = No. of 25 mm pitch patterns of holes
- T1 = Overall depth
- T2 = Enclosure depth
- T3 = Installation depth (distance from inside of door to mounting plate)
- T7 = Gland plate opening

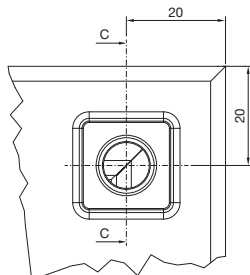
Mounting plate

- F1 = Mounting plate width
- F2 = Centre-to-centre spacing of the attachment holes
- G1 = Mounting plate height
- G2 = Centre-to-centre spacing of the attachment holes

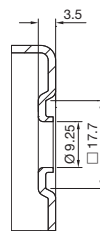
Gland plate

- M = Gland plate width
- O = Gland plate depth
- Type = Size of gland plate

Detail Y



Section C - C



ModelNo. AX	Width dimensions mm							Height dimensions mm							Depth dimensions mm				Mounting plate mm					Gland plate mm		
	B1	B2	B3	B4	B5	B6	B7	H1	H2	H3	H4	H6	N	T1	T2	T3	T7	F1	F2	G1	G2	Type	M	O	Type	
1031.000	380	374	332.7	289.5	305	340	303	300	294	256.5	150	260	6	209.7	187.0	189.0	113	330	280	275	250	2	339	149	2	
1033.000	300	294	252.7	209.5	225	260	220	300	294	256.5	150	260	6	209.7	187.0	189.0	113	250	200	275	250	2	256	149	1	
1034.000	300	294	252.7	209.5	225	260	220	400	394	356.5	250	360	10	209.7	187.0	189.0	113	250	200	375	350	2	256	149	1	
1037.000	400	395	352.2	309.5	325	360	265	800	795	756	650	760	26	300.7	277.5	278.7	185	345	300	775	750	1	301	221	5	
1038.000	380	374	332.7	289.5	305	340	303	600	594	556.5	450	560	18	209.7	187.0	188.5	113	330	280	575	550	2	339	149	2	
1039.000	600	594	552.7	509.5	525	560	498	380	374	336.5	250	340	10	209.7	187.0	188.5	113	550	500	355	330	2	534	149	4	
1045.000	400	394	352.7	309.5	325	360	303	500	494	456.5	350	460	14	209.7	187.0	189.0	113	350	300	475	450	2	339	149	2	
1050.000	500	494	452.7	409.5	425	460	411	500	494	456.5	350	460	14	209.7	187.0	188.5	113	450	400	475	450	2	447	149	3	
1054.000	600	594	552.2	509.5	525	560	498	600	594	556	450	560	18	250.2	227.5	228.7	113	550	500	575	550	2	534	149	4	
1057.000	500	495	452.2	409.5	425	460	411	700	695	656	550	660	22	250.7	227.5	228.7	113	450	400	675	650	2	447	149	3	
1058.000	600	595	552.2	509.5	525	560	498	800	795	756	650	760	26	250.7	227.5	228.7	113	545	500	775	750	1	534	149	4	
1059.000	600	595	552.2	509.5	525	560	400	800	795	756	650	760	26	400.7	377.5	378.7	185	545	500	775	750	1	436	221	7	
1060.000	600	594	552.2	509.5	525	560	498	600	594	556	450	560	18	210.2	187.5	188.7	113	550	500	575	550	2	534	149	4	
1076.000	600	595	552.2	509.5	525	560	498	760	755	716	600	720	24	210.7	187.5	188.7	113	550	500	735	710	2	534	149	4	
1090.000	600	595	552.2	509.5	525	560	498	1000	995	956	850	960	34	250.7	227.5	228.7	113	545	500	975	950	1	534	149	4	
1091.000	600	595	552.2	509.5	525	560	400	1000	995	956	850	960	34	400.7	377.5	378.7	185	545	500	975	950	1	436	221	7	
1338.000	380	374	332.2	289.5	305	340	265	600	594	556.5	450	560	18	350.2	327.5	328.7	185	330	280	575	550	2	301	221	5	
1339.000	600	594	552.2	509.5	525	560	400	380	374	336	250	340	10	350.2	327.5	328.7	185	550	500	355	330	2	436	221	7	
1350.000	500	494	452.2	409.5	425	460	365	500	494	456	350	460	14	300.2	277.5	278.7	185	450	400	475	450	2	401	221	6	
1360.000	600	594	552.2	509.5	525	560	400	600	594	556	450	560	18	350.2	327.5	328.7	185	550	500	575	550	2	436	221	7	
1376.000	600	595	552.2	509.5	525	560	400	760	755	716	600	720	24	350.7	327.5	328.7	185	550	500	735	710	2	436	221	7	
1380.000	380	374	332.7	289.5	305	340	303	380	374	336.5	250	340	10	209.7	187.0	189.0	113	330	280	355	330	2	339	149	2	

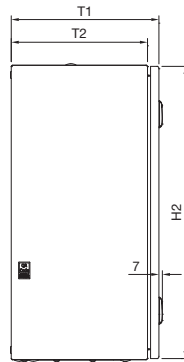
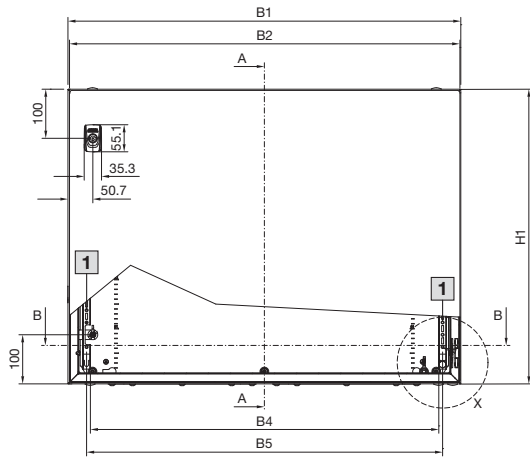
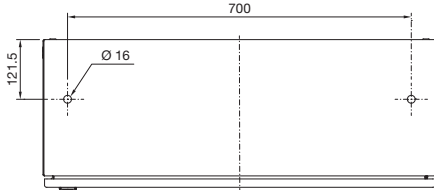
Compact enclosures

Compact enclosures AX, sheet steel

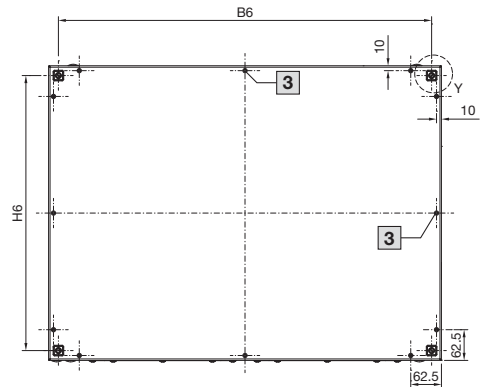
Basic enclosure AX

with cam lock and two gland plates

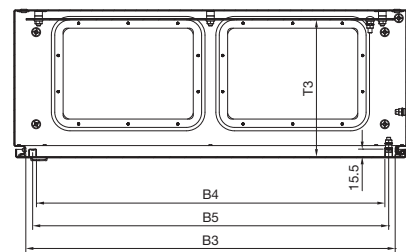
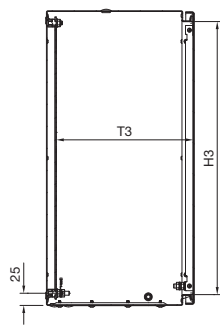
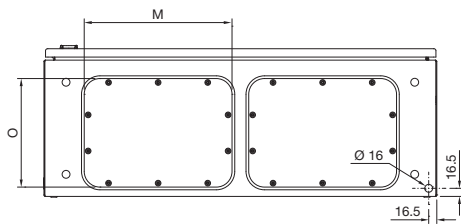
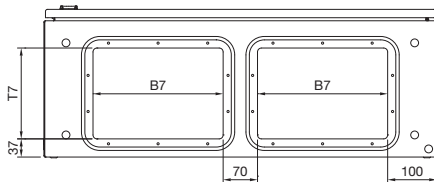
Drilled holes for eyebolts
(only for 1055.000/1180.000/1181.000)



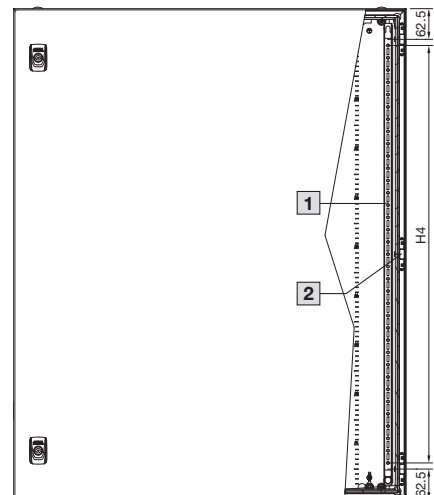
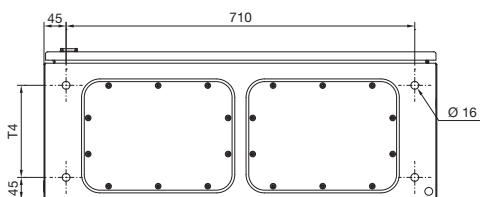
Section A – A



Section B – B



Drilled holes for base/plinth
(only for 1055.000/1180.000/1181.000)



- 1 Door interior view
- 2 Central hinge, only where H1 > 800 mm
- 3 Central embossed half-shear, only where B1/H1 ≥ 500 mm
- 4 Not applicable to B1 = 300 mm

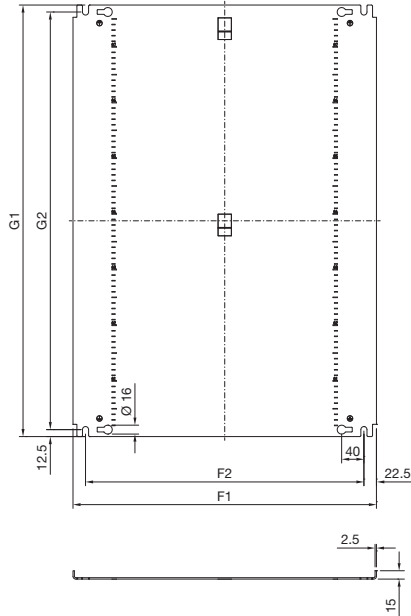
Compact enclosures

Compact enclosures AX, sheet steel

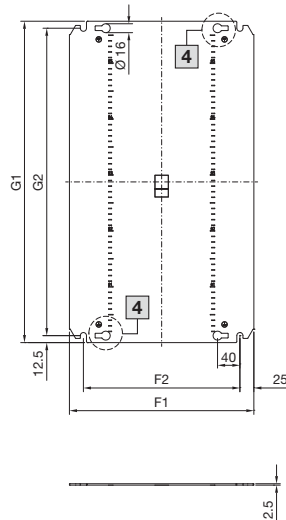
Basic enclosure AX

with cam lock and two gland plates

Mounting plate type 1,
with edge fold



Mounting plate type 2,
without edge fold



Enclosure

- B1 = Enclosure width (overall width)
- B2 = Door width
- B3 = Clearance width, enclosure opening
- B4 = Clearance width between door profile strips
- B5 = Mounting distance, door profile strips
- B6 = Mounting distance, enclosures
- B7 = Gland plate opening
- H1 = Enclosure height (overall height)
- H2 = Door height
- H3 = Clearance height, enclosure opening
- H4 = Overall height, 25 mm pitch pattern of holes
- H5 = Mounting distance, enclosures
- N = No. of 25 mm pitch patterns of holes
- T1 = Overall depth
- T2 = Enclosure depth
- T3 = Installation depth (distance from inside of door to mounting plate)
- T4 = Spacing between holes for base/plinth
- T7 = Gland plate opening

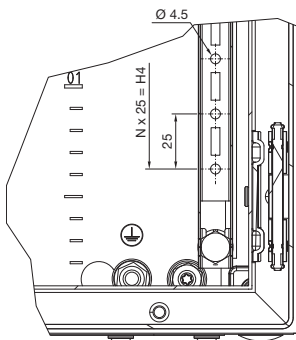
Mounting plate

- F1 = Mounting plate width
- F2 = Centre-to-centre spacing of the attachment holes
- G1 = Mounting plate height
- G2 = Centre-to-centre spacing of the attachment holes

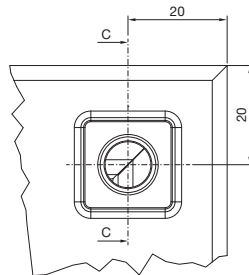
Gland plate

- M = Gland plate width
- O = Gland plate depth
- Type = Size of gland plate

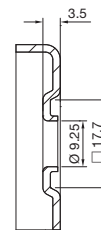
Detail X



Detail Y



Section C - C



Model No. AX	Width dimensions mm							Height dimensions mm							Depth dimensions mm					Mounting plate mm					Gland plate mm		
	B1	B2	B3	B4	B5	B6	B7	H1	H2	H3	H4	H5	H6	N	T1	T2	T3	T4	T7	F1	F2	G1	G2	Type	M	O	Type
1055.000	800	795	752.2	709.5	725	760	265	600	595	556	450	560	185	18	300.7	277.5	278.7	187.5	185	750	700	575	550	2	301	221	5
1073.000	760	755	712.2	669.5	685	720	265	760	755	716	600	720	185	24	300.7	277.5	278.7	-	185	705	660	735	710	1	301	221	5
1077.000	760	755	712.2	669.5	685	720	303	760	755	716	600	720	113	24	210.7	187.5	188.7	-	113	705	660	735	710	1	339	149	2
1180.000	800	795	752.2	709.5	725	760	265	1000	995	956	850	960	185	34	300.7	277.5	278.7	187.5	185	745	700	975	950	1	301	221	5
1181.000	800	795	752.2	709.5	725	760	265	1000	995	956	850	960	185	34	400.7	377.5	378.7	287.5	185	745	700	975	950	1	301	221	5

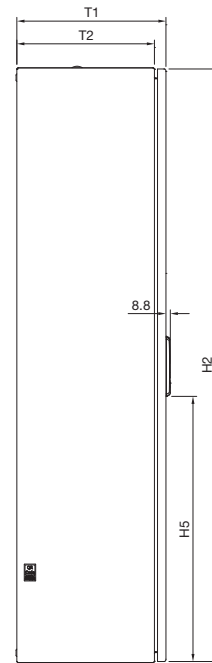
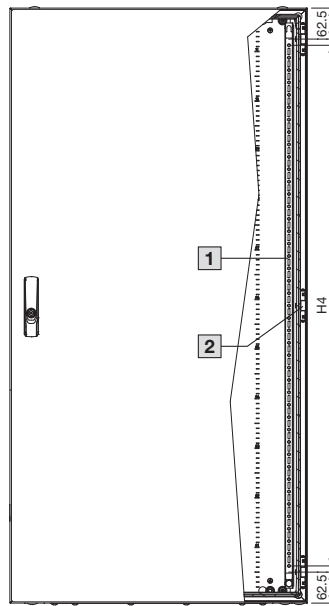
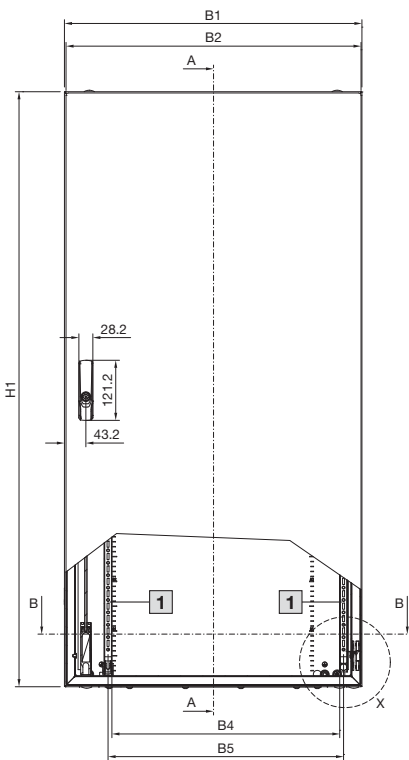
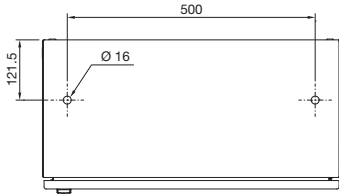
Compact enclosures

Compact enclosures AX, sheet steel

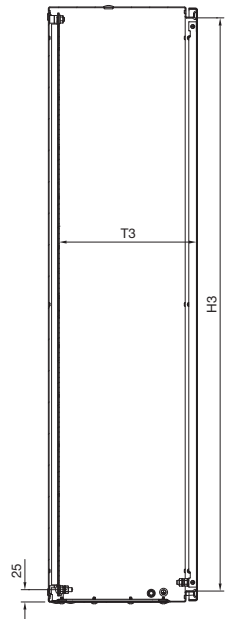
Basic enclosure AX

with 3-point locking system and one gland plate

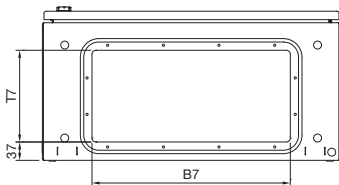
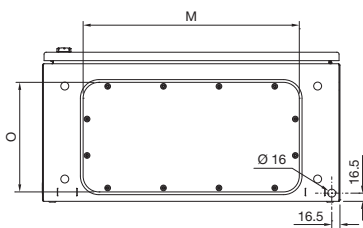
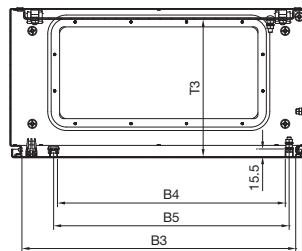
Drilled holes for eyebolts



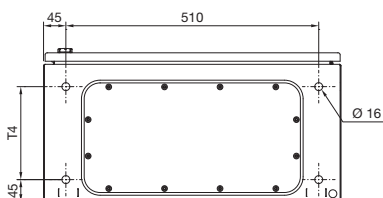
Section A – A



Section B – B



Drilled holes for base/plinth



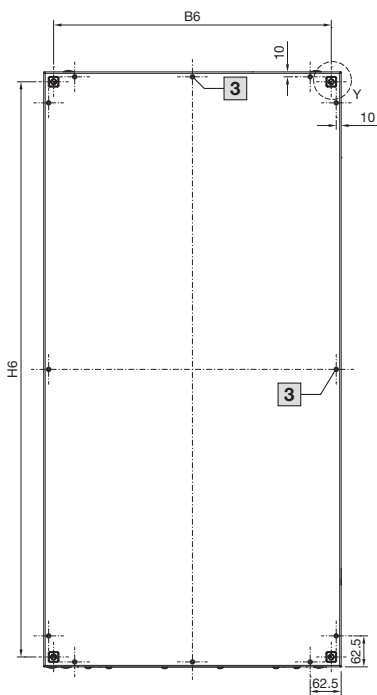
- 1 Door interior view
- 2 Central hinge, only where $H1 > 800$ mm
- 3 Central embossed half-shear, only where $B1/H1 \geq 500$ mm

Compact enclosures

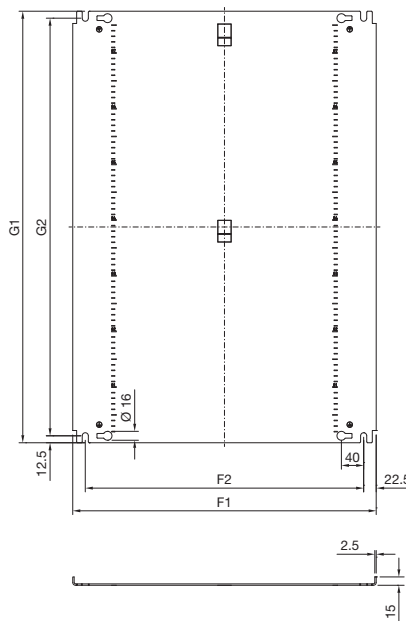
Compact enclosures AX, sheet steel

Basic enclosure AX

with 3-point locking system and one gland plate



Mounting plate type 1, with edge fold



Enclosure

- B1 = Enclosure width (overall width)
- B2 = Door width
- B3 = Clearance width, enclosure opening
- B4 = Clearance width between door profile strips
- B5 = Mounting distance, door profile strips
- B6 = Mounting distance, enclosures
- B7 = Gland plate opening
- H1 = Enclosure height (overall height)
- H2 = Door height
- H3 = Clearance height, enclosure opening
- H4 = Overall height, 25 mm pitch pattern of holes
- H5 = Distance from bottom edge of door to bottom edge of lock plate
- H6 = Mounting distance, enclosures
- N = No. of 25 mm pitch patterns of holes

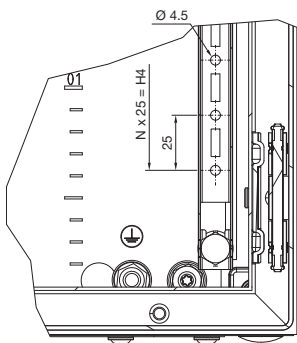
Mounting plate

- T1 = Overall depth
- T2 = Enclosure depth
- T3 = Installation depth (distance from inside of door to mounting plate)
- T4 = Spacing between holes for base/plinth
- T7 = Gland plate opening

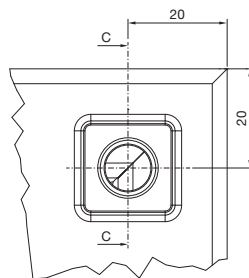
Gland plate

- M = Gland plate width
- O = Gland plate depth
- Type = Size of gland plate

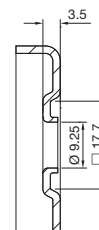
Detail X



Detail Y



Section C - C



Model No. AX	Width dimensions mm							Height dimensions mm							Depth dimensions mm					Mounting plate mm					Gland plate mm		
	B1	B2	B3	B4	B5	B6	B7	H1	H2	H3	H4	H5	H6	N	T1	T2	T3	T4	T7	F1	F2	G1	G2	Type	M	O	Type
1260.000	600	595	552.2	459.5	475	560	400	1200	1195	1156	1050	534.7	1160	42	300.7	277.5	277.2	187.5	185	545	500	1175	1150	1	436	221	7
1261.000	600	595	552.2	459.5	475	560	400	1200	1195	1156	1050	534.7	1160	42	400.7	377.5	377.2	287.5	185	545	500	1175	1150	1	436	221	7

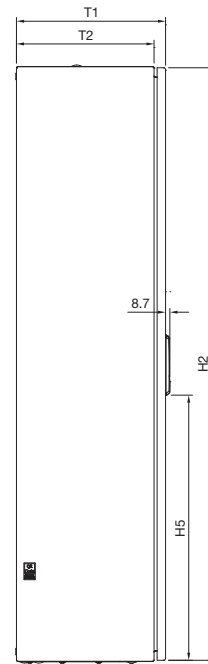
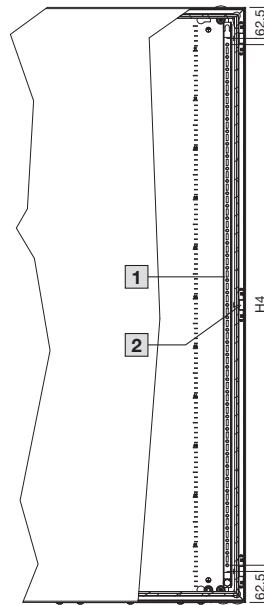
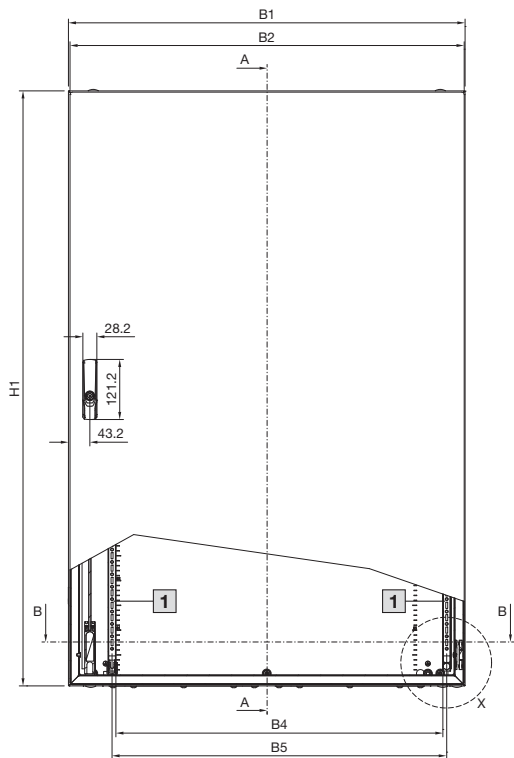
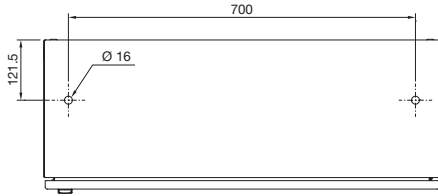
Compact enclosures

Compact enclosures AX, sheet steel

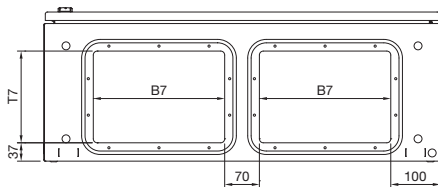
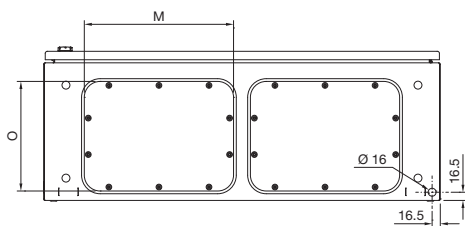
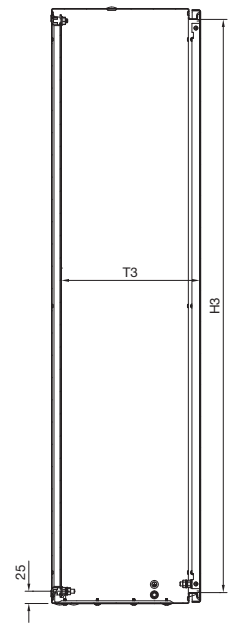
Basic enclosure AX

with 3-point locking system and two gland plates

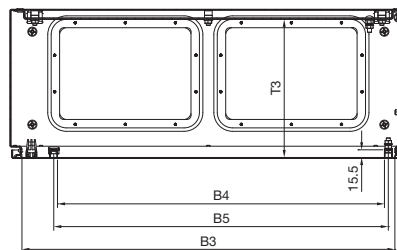
Drilled holes for eyebolts



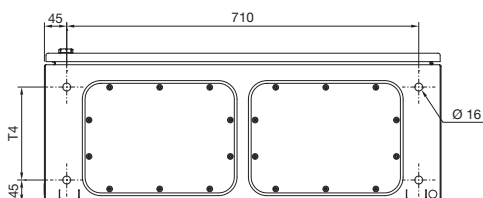
Section A – A



Section B – B



Drilled holes for base/plinth



- 1 Door interior view
- 2 Central hinge, only where $H1 > 800$ mm
- 3 Central embossed half-shear, only where $B1/H1 \geq 500$ mm

Compact enclosures

Compact enclosures AX, sheet steel

Basic enclosure AX

with 3-point locking system and two gland plates

Enclosure

- B1 = Enclosure width (overall width)
- B2 = Door width
- B3 = Clearance width, enclosure opening
- B4 = Clearance width between door profile strips
- B5 = Mounting distance, door profile strips
- B6 = Mounting distance, enclosures
- B7 = Gland plate opening

- H1 = Enclosure height (overall height)
- H2 = Door height
- H3 = Clearance height, enclosure opening
- H4 = Overall height, 25 mm pitch pattern of holes
- H5 = Distance from bottom edge of door to bottom edge of lock plate
- H6 = Mounting distance, enclosures
- N = No. of 25 mm pitch patterns of holes

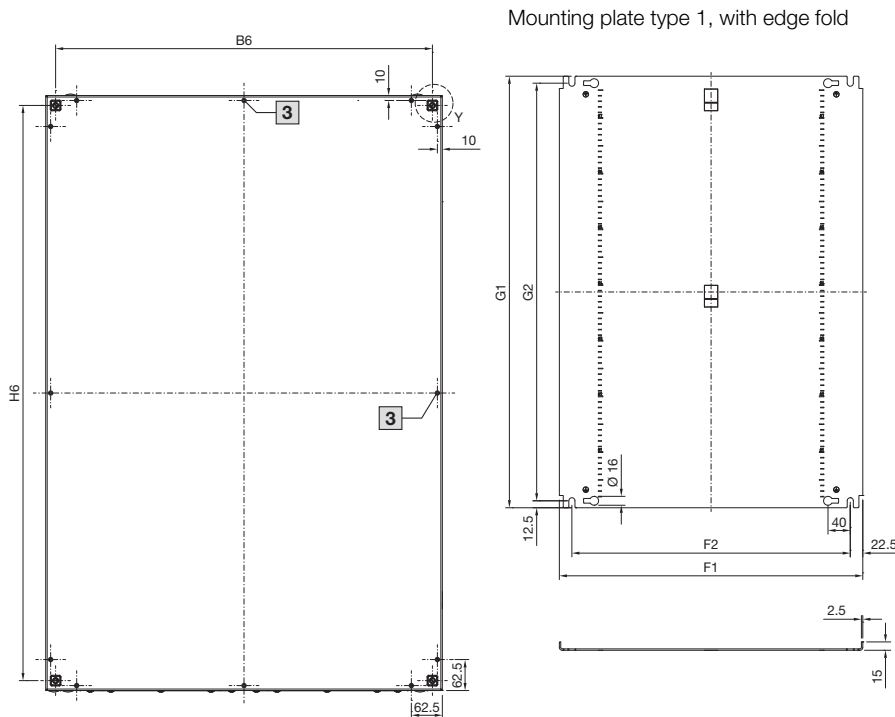
- T1 = Overall depth
- T2 = Enclosure depth
- T3 = Installation depth (distance from inside of door to mounting plate)
- T4 = Spacing between holes for base/plinth
- T7 = Gland plate opening

Mounting plate

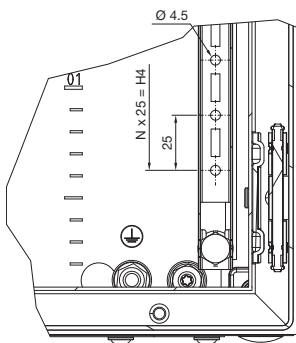
- F1 = Mounting plate width
- F2 = Centre-to-centre spacing of the attachment holes
- G1 = Mounting plate height
- G2 = Centre-to-centre spacing of the attachment holes

Gland plate

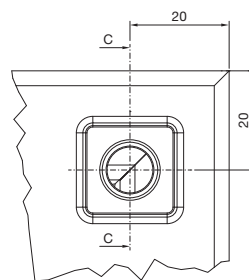
- M = Gland plate width
- O = Gland plate depth
- Type = Size of gland plate



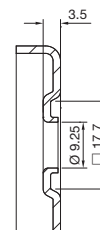
Detail X



Detail Y



Section C - C



Model No. AX	Width dimensions mm							Height dimensions mm							Depth dimensions mm							Mounting plate mm					Gland plate mm		
	B1	B2	B3	B4	B5	B6	B7	H1	H2	H3	H4	H5	H6	N	T1	T2	T3	T4	T7	F1	F2	G1	G2	Type	M	O	Type		
1280.000	800	795	752.2	659.5	675	760	265	1200	1195	1156	1050	534.7	1160	42	300.7	277.5	278.7	187.5	185	745	700	1175	1150	1	301	221	5		
1281.000	800	795	752.2	659.5	675	760	265	1200	1195	1156	1050	534.7	1160	42	400.7	377.5	378.7	287.5	185	745	700	1175	1150	1	301	221	5		

Compact enclosures

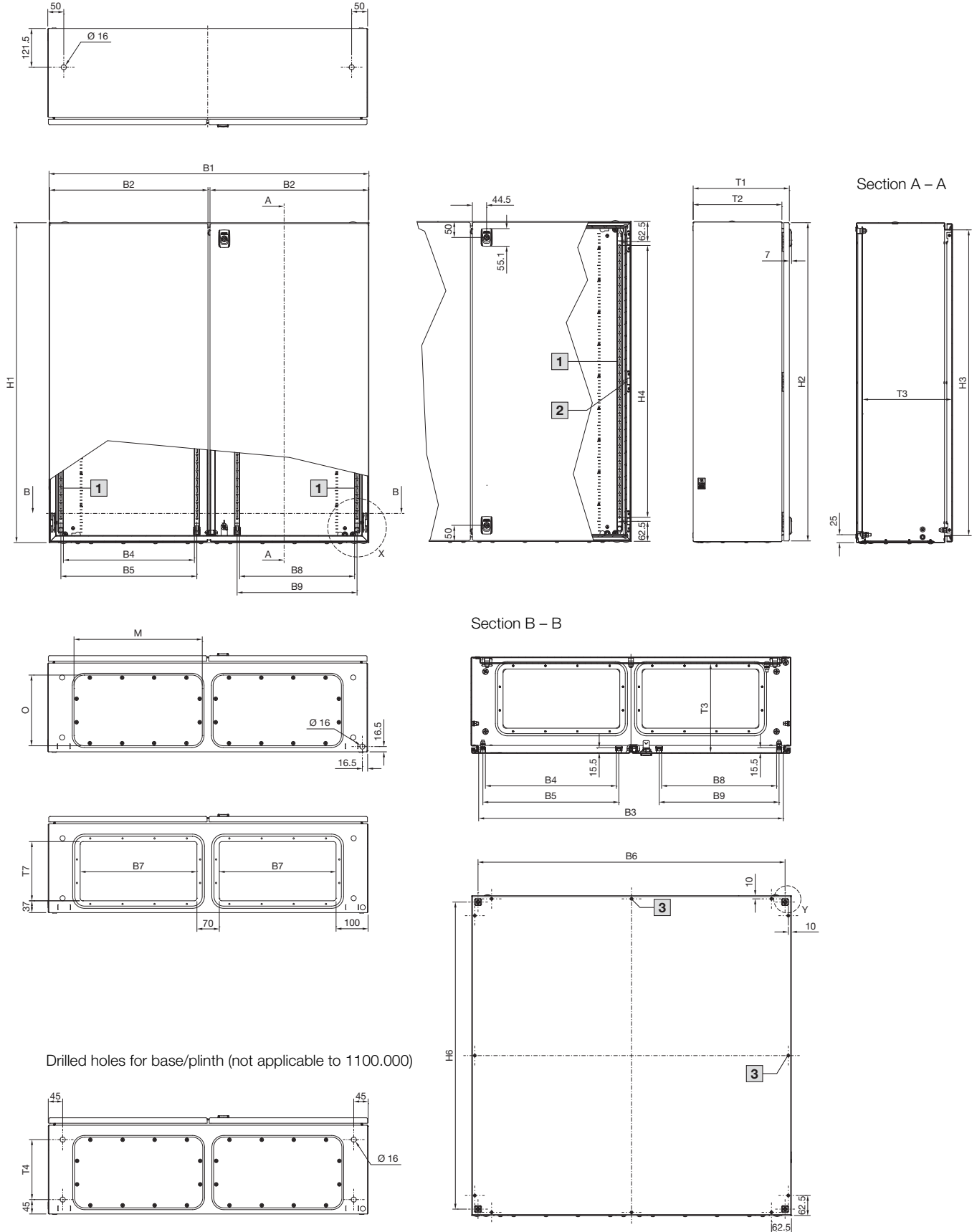
Compact enclosures AX, sheet steel

Basic enclosure AX

with cam lock, two-door

Drilled holes for eyebolts (not applicable to 1100.000)

- 1 Door interior view
- 2 Central hinge, only where $H1 > 800$ mm
- 3 Central embossed half-shear, only where $B1/H1 \geq 500$ mm

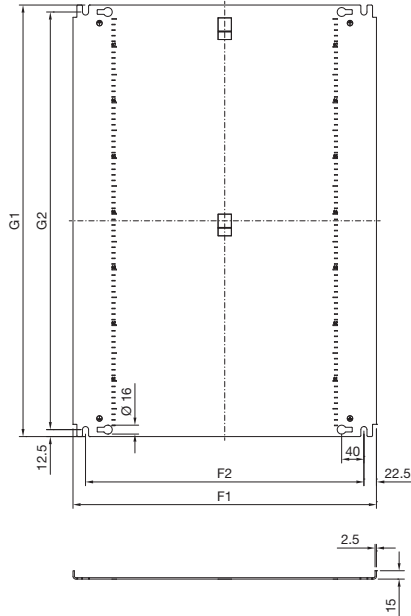


Compact enclosures

Compact enclosures AX, sheet steel

Basic enclosure AX with cam lock, two-door

Mounting plate type 1, with edge fold



Enclosure

- B1 = Enclosure width (overall width)
- B2 = Door width
- B3 = Clearance width, enclosure opening
- B4 = Clearance width between door profile strips, hinged door (left-hand door)
- B5 = Mounting distance, door profile strips, hinged door (left-hand door)
- B6 = Mounting distance, enclosures
- B7 = Gland plate opening
- B8 = Clearance width between door profile strips, locked door (right-hand door)
- B9 = Mounting distance, door profile strips, locked door (right-hand door)
- H1 = Enclosure height (overall height)
- H2 = Door height
- H3 = Clearance height, enclosure opening
- H4 = Overall height, 25 mm pitch pattern of holes
- H6 = Mounting distance, enclosures
- N = No. of 25 mm pitch patterns of holes
- T1 = Overall depth
- T2 = Enclosure depth
- T3 = Installation depth (distance from inside of door to mounting plate)
- T4 = Spacing between holes for base/plinth
- T7 = Gland plate opening

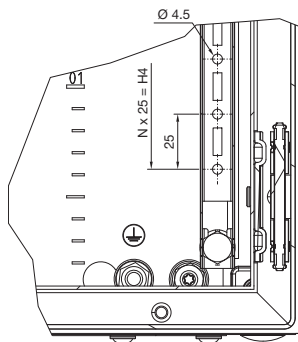
Mounting plate

- F1 = Mounting plate width
- F2 = Centre-to-centre spacing of the attachment holes
- G1 = Mounting plate height
- G2 = Centre-to-centre spacing of the attachment holes

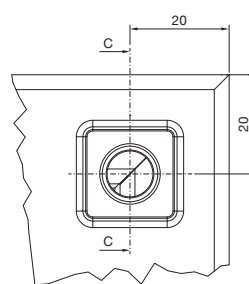
Gland plate

- M = Gland plate width
- O = Gland plate depth
- Type = Size of gland plate

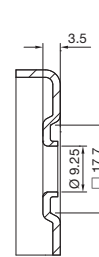
Detail X



Detail Y



Section C – C



Model No. AX	Width dimensions mm									Height dimensions mm						Depth dimensions mm				
	B1	B2	B3	B4	B5	B6	B7	B8	B9	H1	H2	H3	H4	H6	N	T1	T2	T3	T4	T7
1100.000	1000	495	952.4	409.5	425	960	411	359.5	375	760	755	716	600	720	24	210.7	187.5	188.7	–	113
1110.000	1000	495	952.4	409.5	425	960	365	359.5	375	1000	995	956	850	960	34	300.7	277.5	278.7	187.5	185
1130.000	1000	495	952.4	409.5	425	960	365	359.5	375	760	755	716	600	720	24	300.7	277.5	278.7	187.5	185

Model No. AX	Mounting plate mm					Gland plate mm		
	F1	F2	G1	G2	Type	M	O	Type
1100.000	945	900	735	710	1	447	149	3
1110.000	945	900	975	950	1	401	221	6
1130.000	945	900	735	710	1	401	221	6

Compact enclosures

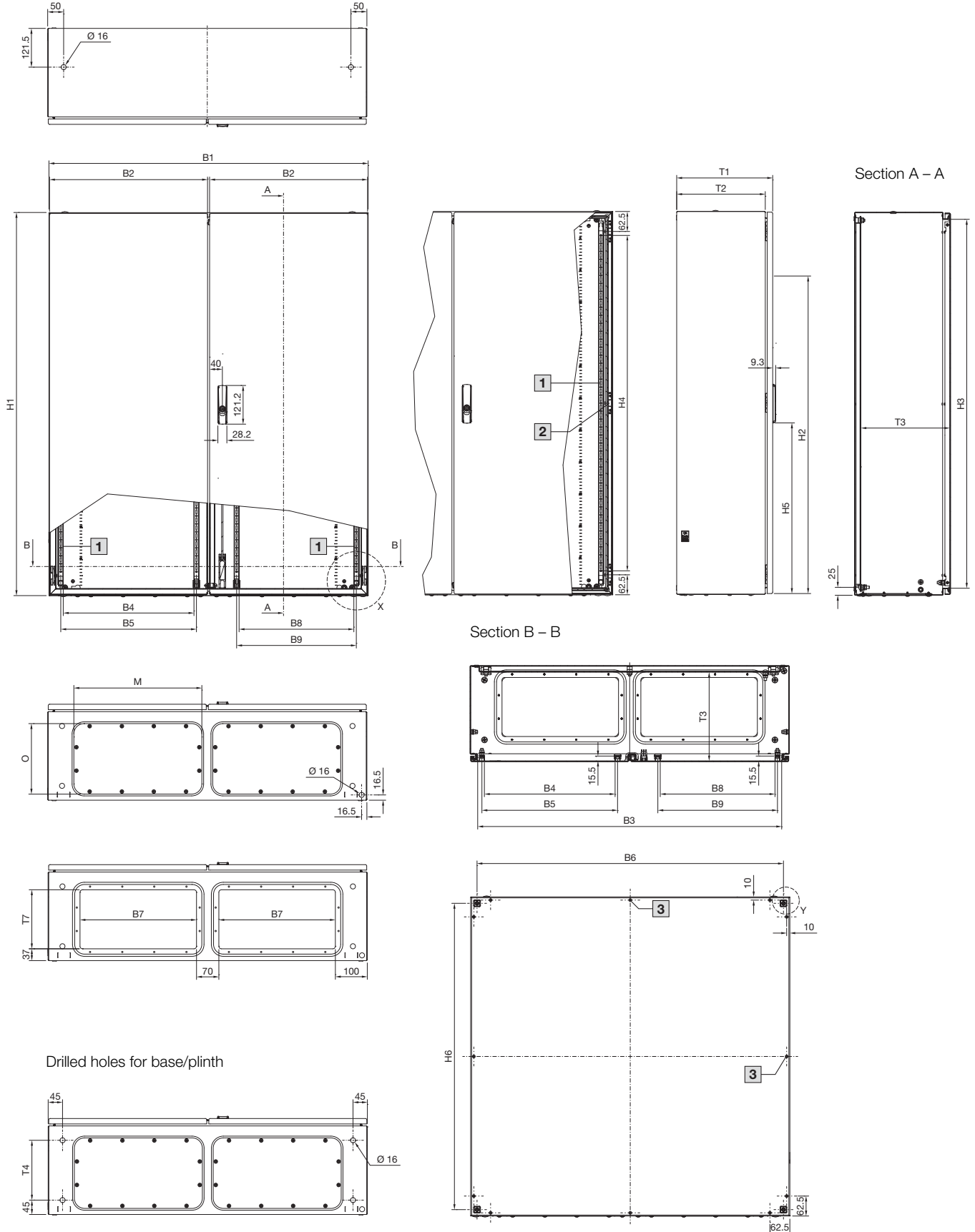
Compact enclosures AX, sheet steel

Basic enclosure AX

with 3-point lock system, double-door

Drilled holes for eyebolts

- 1 Door interior view
- 2 Central hinge, only where $H1 > 800$ mm
- 3 Central embossed half-shear, only where $B1/H1 \geq 500$ mm



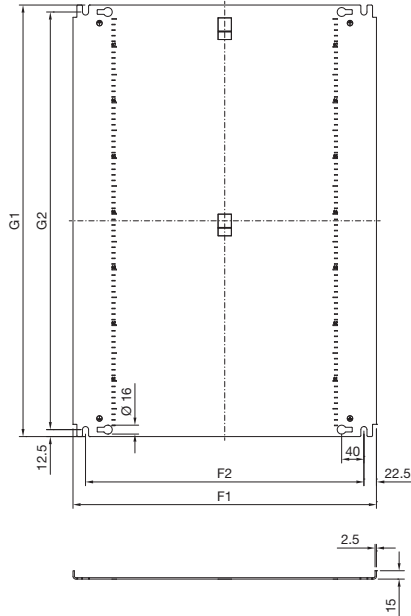
Compact enclosures

Compact enclosures AX, sheet steel

Basic enclosure AX

with 3-point lock system, double-door

Mounting plate type 1, with edge fold



Enclosure

- B1 = Enclosure width (overall width)
- B2 = Door width
- B3 = Clearance width, enclosure opening
- B4 = Clearance width between door profile strips, hinged door (left-hand door)
- B5 = Mounting distance, door profile strips, hinged door (left-hand door)
- B6 = Mounting distance, enclosures
- B7 = Gland plate opening
- B8 = Clearance width between door profile strips, locked door (right-hand door)
- B9 = Mounting distance, door profile strips, locked door (right-hand door)
- H1 = Enclosure height (overall height)
- H2 = Door height
- H3 = Clearance height, enclosure opening
- H4 = Overall height, 25 mm pitch pattern of holes
- H5 = Distance from bottom edge of door to bottom edge of lock plate
- H6 = Mounting distance, enclosures
- N = No. of 25 mm pitch patterns of holes
- T1 = Overall depth
- T2 = Enclosure depth
- T3 = Installation depth (distance from inside of door to mounting plate)
- T4 = Spacing between holes for base/plinth
- T7 = Gland plate opening

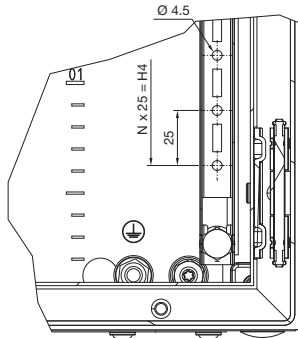
Mounting plate

- F1 = Mounting plate width
- F2 = Centre-to-centre spacing of the attachment holes
- G1 = Mounting plate height
- G2 = Centre-to-centre spacing of the attachment holes

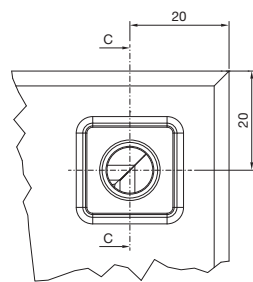
Gland plate

- M = Gland plate width
- O = Gland plate depth
- Type = Size of gland plate

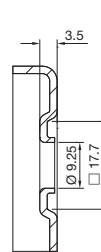
Detail X



Detail Y



Section C - C



Model No. AX	Width dimensions mm									Height dimensions mm							Depth dimensions mm				
	B1	B2	B3	B4	B5	B6	B7	B8	B9	H1	H2	H3	H4	H5	H6	N	T1	T2	T3	T4	T7
1213.000	1000	495	952.4	409.5	425	960	365	359.5	375	1200	1195	1156	1050	534.7	1160	42	300.7	277.5	278.7	187.5	185
1114.000	1000	495	952.4	409.5	425	960	365	359.5	375	1,400	1395	1356	1250	634.7	1360	50	300.7	277.5	278.7	187.5	185
1214.000	1000	495	952.4	409.5	425	960	365	359.5	375	1200	1195	1156	1050	534.7	1160	42	400.7	377.5	378.7	287.5	185
1115.000	1000	495	952.4	409.5	425	960	365	359.5	375	1,400	1395	1356	1250	634.7	1360	50	400.7	377.5	378.7	287.5	185
1116.000	1200	595	1152.4	509.5	525	1160	400	459.5	475	1200	1195	1156	1050	534.7	1160	42	400.7	377.5	378.7	287.5	185

Model No. AX	Mounting plate mm					Gland plate mm			
	F1	F2	G1	G2	Type	M	O	Type	
1213.000	945	900	1175	1150	1	401	221	6	
1114.000	945	900	1375	1350	1	401	221	6	
1214.000	945	900	1175	1150	1	401	221	6	
1115.000	945	900	1375	1350	1	401	221	6	
1116.000	1145	1100	1175	1150	1	436	221	7	

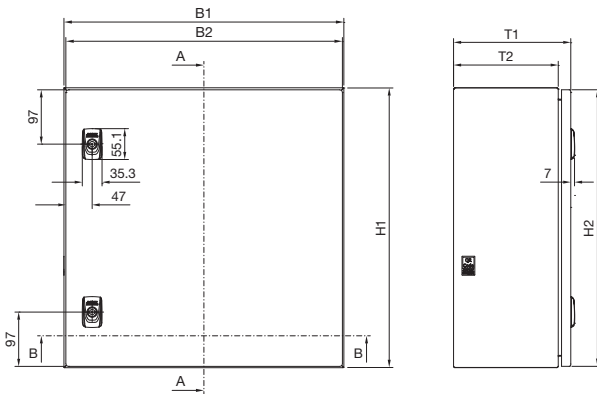
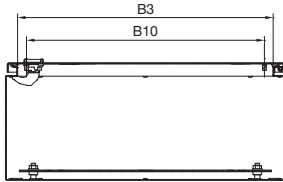
Compact enclosures

Compact enclosures AX, stainless steel

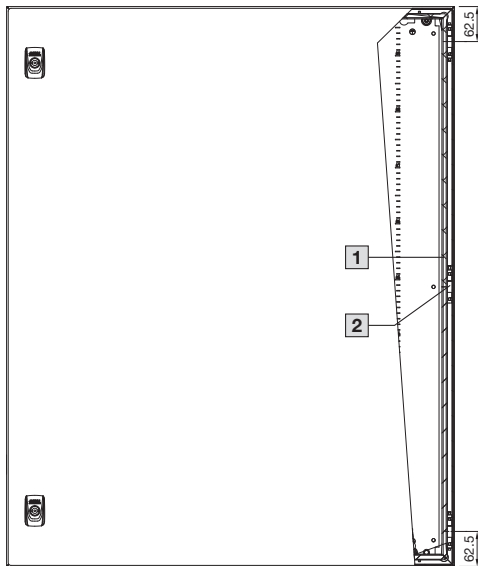
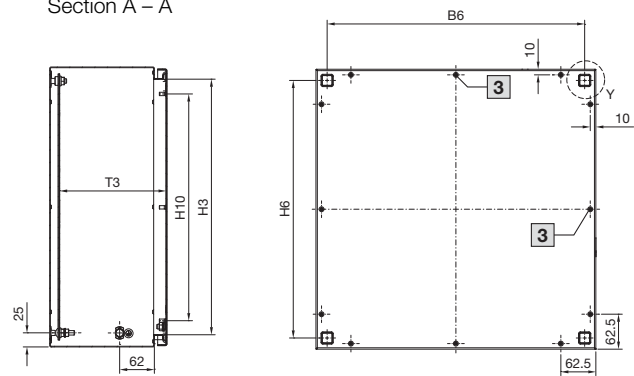
Basic enclosure AX with cam lock, single-door

- 1 Door interior view
- 2 Central hinge, only where $H1 > 800$ mm
- 3 Central embossed half-shear, only where $B1/H1 \geq 500$ mm
- 4 Not applicable to $B1 = 300$ mm

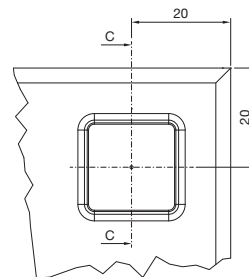
Section B – B



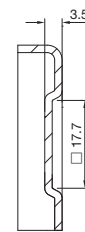
Section A – A



Detail Y



Section C – C

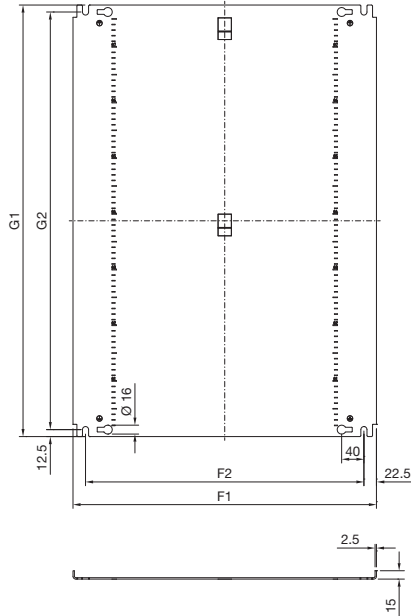


Compact enclosures

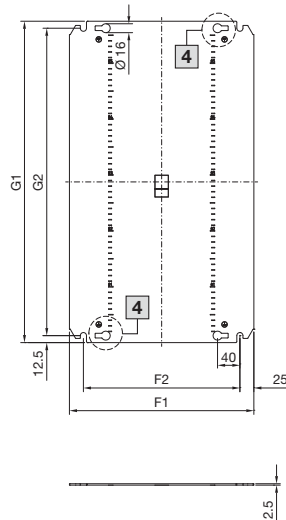
Compact enclosures AX, stainless steel

Basic enclosure AX with cam lock, single-door

Mounting plate type 1,
with edge fold



Mounting plate type 2,
without edge fold



Enclosure

B1 = Enclosure width (overall width)
B2 = Door width
B3 = Clearance width, enclosure opening
B6 = Mounting distance, enclosures
B10 = Distance between threaded bolts

H1 = Enclosure height (overall height)
H2 = Door height
H3 = Clearance height, enclosure opening
H6 = Mounting distance, enclosures
H10 = Distance between threaded bolts

T1 = Overall depth
T2 = Enclosure depth
T3 = Installation depth (distance from inside of door to mounting plate)

Mounting plate

F1 = Mounting plate width
F2 = Centre-to-centre spacing of the attachment holes

G1 = Mounting plate height
G2 = Centre-to-centre spacing of the attachment holes

Model No. AX	Width dimensions mm					Height dimensions mm					Depth dimensions mm			Mounting plates mm				
	B1	B2	B3	B6	B10	H1	H2	H3	H6	H10	T1	T2	T3	F1	F2	G1	G2	Type
1003.000	300	294	256.5	260	225	300	294	256.5	260	205	209.4	187.0	189.9	250	200	275	250	2
1005.000	300	294	256.5	260	225	380	374	336.5	340	285	209.4	187.0	189.9	250	200	355	330	2
1006.000	380	374	336.5	340	305	380	374	336.5	340	285	209.4	187.0	189.9	330	280	355	330	2
1007.000	500	494	456.5	460	425	500	494	456.5	460	405	209.4	187.0	189.9	450	400	475	450	2
1008.000	380	374	336.5	340	305	600	594	556.5	560	505	209.4	187.0	189.9	330	280	575	550	2
1009.000	600	594	556.5	560	525	380	374	336.5	340	285	209.4	187.0	189.9	550	500	355	330	2
1010.000	600	594	556.0	560	525	600	594	556	560	505	209.4	187.5	189.9	550	500	575	550	2
1011.000	380	374	336.5	340	305	300	294	256.5	260	205	209.4	187.0	189.9	330	280	275	250	2
1012.000	600	595	556.0	560	525	760	755	716.5	720	665	209.4	187.5	189.9	550	500	735	710	2
1013.000	500	494	456.0	460	425	500	494	456.5	460	405	300.4	277.5	280.9	450	400	475	450	2
1014.000	760	755	716.0	720	685	760	755	716.5	720	665	300.4	277.5	280.9	705	660	735	710	1
1015.000	400	394	356.5	360	325	500	494	456.5	460	405	209.4	187.0	189.9	350	300	475	450	2
1016.000	800	795	756.0	760	725	1000	995	956.5	960	905	300.4	277.5	280.9	745	700	975	950	1
1302.000	300	294	256.5	260	225	380	374	336.5	340	285	209.4	187.0	189.9	250	200	355	330	2
1303.000	380	374	336.5	340	305	380	374	336.5	340	285	209.4	187.0	189.9	330	280	355	330	2
1304.000	600	594	556.0	560	525	600	594	556.5	560	505	209.4	187.5	189.9	550	500	575	550	2

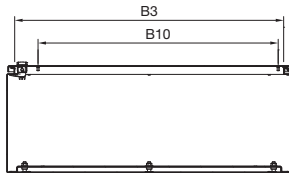
Compact enclosures

Compact enclosures AX, stainless steel

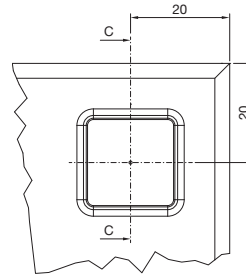
Basic enclosure AX

with 3-point lock system, single-door

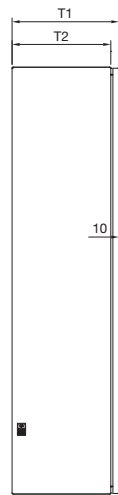
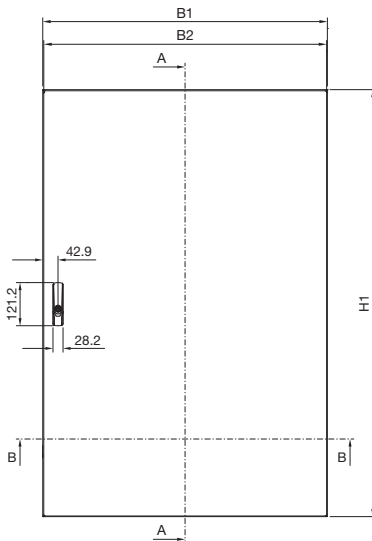
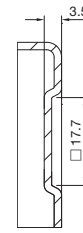
Section B – B



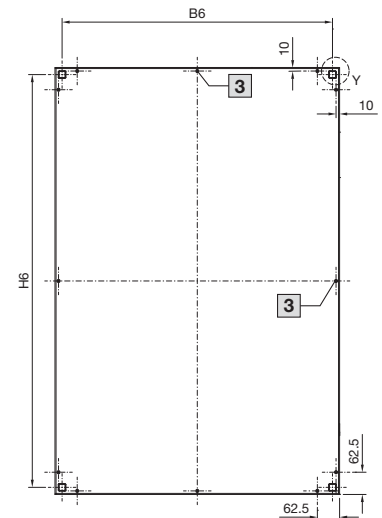
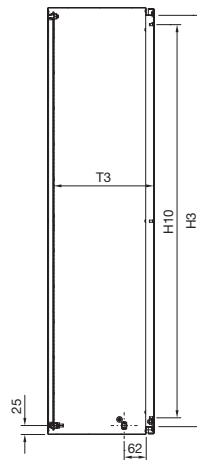
Detail Y



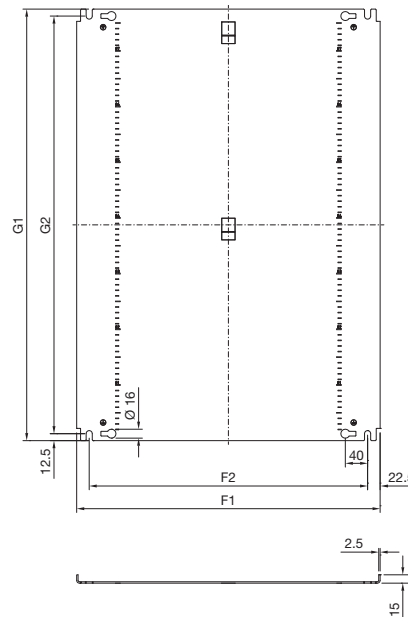
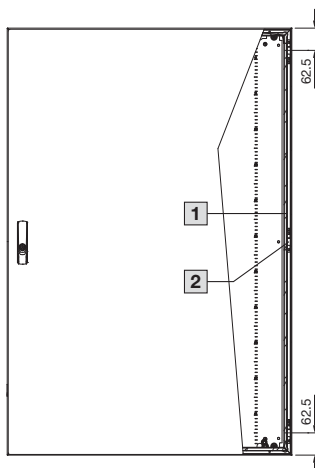
Section C – C



Section A – A



Mounting plate type 1, with edge fold



Enclosure

- B1 = Enclosure width (overall width)
- B2 = Door width
- B3 = Clearance width, enclosure opening
- B6 = Mounting distance, enclosures
- B10 = Distance between threaded bolts
- H1 = Enclosure height (overall height)
- H2 = Door height
- H3 = Clearance height, enclosure opening
- H5 = Bottom edge of door to bottom edge of lock plate
- H6 = Mounting distance, enclosures
- H10 = Distance between threaded bolts
- T1 = Overall depth
- T2 = Enclosure depth
- T3 = Installation depth (distance from inside of door to mounting plate)

Mounting plate

- F1 = Mounting plate width
- F2 = Centre-to-centre spacing of the attachment holes
- G1 = Mounting plate height
- G2 = Centre-to-centre spacing of the attachment holes

- 1 Door interior view
- 2 Central hinge, only where H1 > 800 mm
- 3 Central embossed half-shear, only where B1/H1 ≥ 500 mm

Model No. AX	Width dimensions mm					Height dimensions mm						Depth dimensions mm			Mounting plates mm				
	B1	B2	B3	B6	B10	H1	H2	H3	H5	H6	H10	T1	T2	T3	F1	F2	G1	G2	Type
1017.000	800	795	756	760	675	1200	1195	1156	534.7	1160	1150	300.4	277.5	280.4	745	700	1175	1150	1

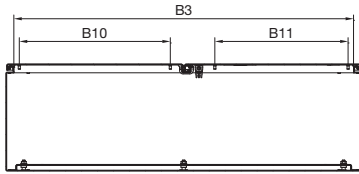
Compact enclosures

Compact enclosures AX, stainless steel

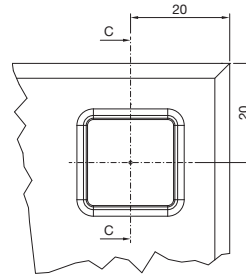
Basic enclosure AX

with cam lock, double-door
with 3-point locking system, double-door

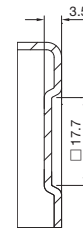
Section B – B



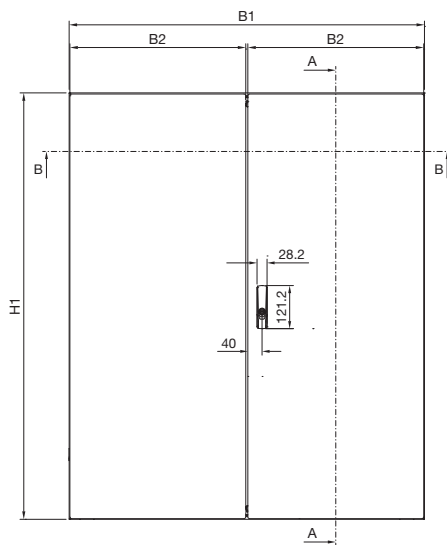
Detail Y



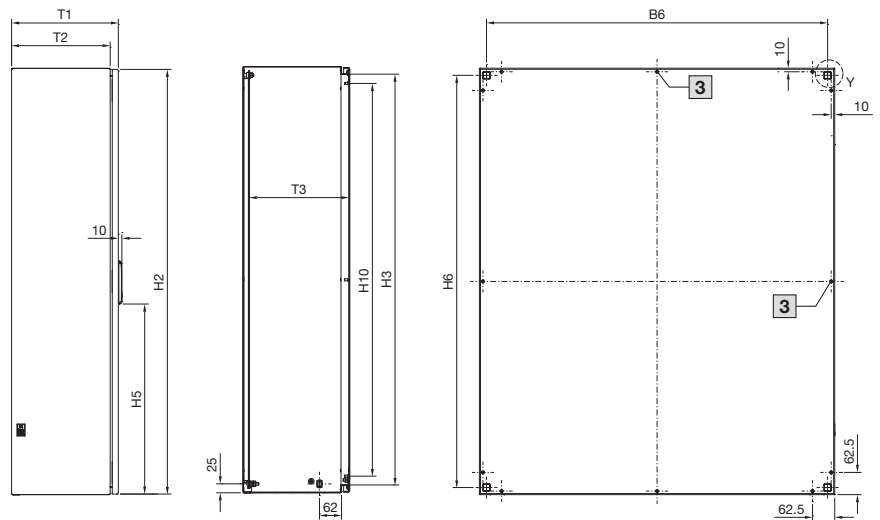
Section C – C



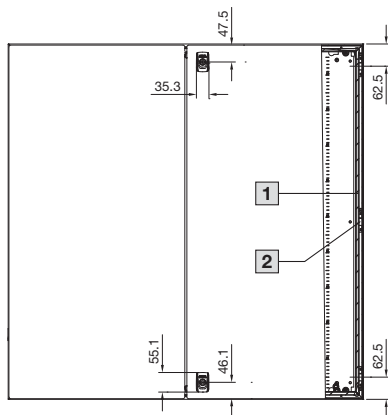
With 3-point lock system where $H1 > 1000$ mm



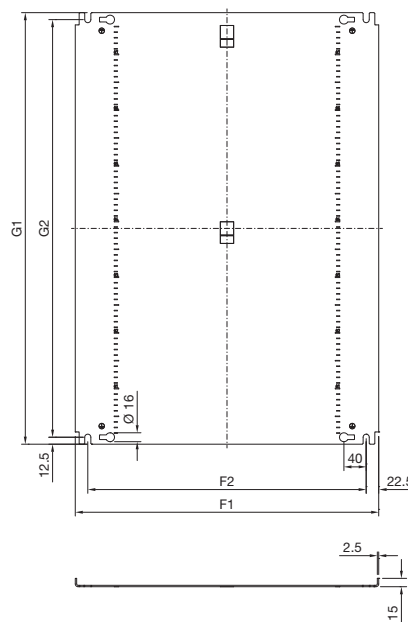
Section A – A



With cam lock where $H1 \leq 1000$ mm



Mounting plate type 1, with edge fold



Enclosure

- B1 = Enclosure width (overall width)
- B2 = Door width
- B3 = Clearance width, enclosure opening
- B6 = Mounting distance, enclosures
- B10 = Distance between threaded bolts, adjacent door
- B11 = Distance between threaded bolts, locked door
- H1 = Enclosure height (overall height)
- H2 = Door height
- H3 = Clearance height, enclosure opening
- H5 = Bottom edge of door to bottom edge of lock plate
- H6 = Mounting distance, enclosures
- H10 = Distance between threaded bolts
- T1 = Overall depth
- T2 = Enclosure depth
- T3 = Installation depth (distance from inside of door to mounting plate)

Mounting plate

- F1 = Mounting plate width
- F2 = Centre-to-centre spacing of the attachment holes
- G1 = Mounting plate height
- G2 = Centre-to-centre spacing of the attachment holes

- 1 Door interior view
- 2 Central hinge, only where $H1 > 800$ mm
- 3 Central embossed half-shear, only where $B1/H1 \geq 500$ mm

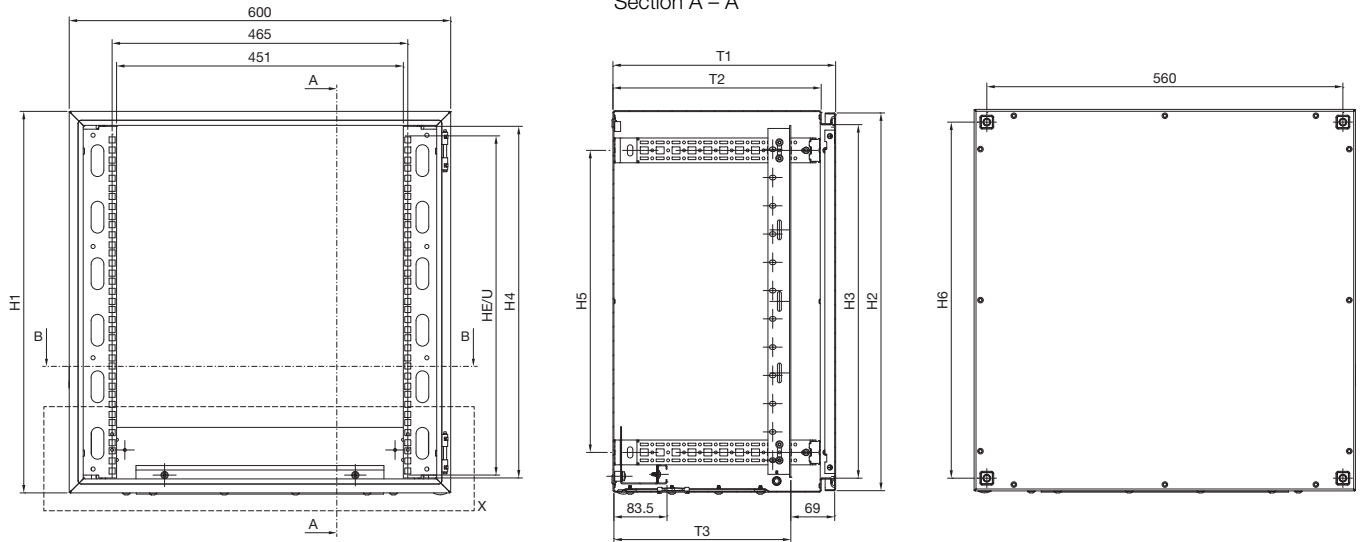
Model No. AX	Width dimensions mm						Height dimensions mm						Depth dimensions mm			Mounting plates mm				
	B1	B2	B3	B6	B10	B11	H1	H2	H3	H5	H6	H10	T1	T2	T3	F1	F2	G1	G2	Type
1018.000	1000	495	956	960	425	375	1000	995	956	-	960	905	300.4	277.5	280.4	945	900	975	950	1
1019.000	1000	495	956	960	425	375	1200	1195	1156	535.4	1160	1105	300.4	277.5	280.4	945	900	1175	1150	1
1305.000	1000	495	956	960	425	375	1200	1195	1156	535.4	1160	1105	300.4	277.5	280.4	945	900	1175	1150	1

Compact enclosures

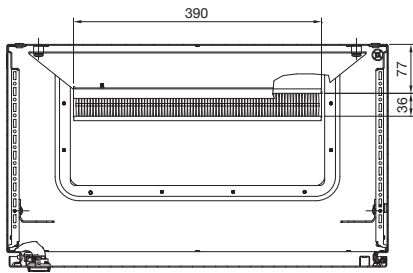
Compact enclosures AX

Wall-mounted enclosures AX IT

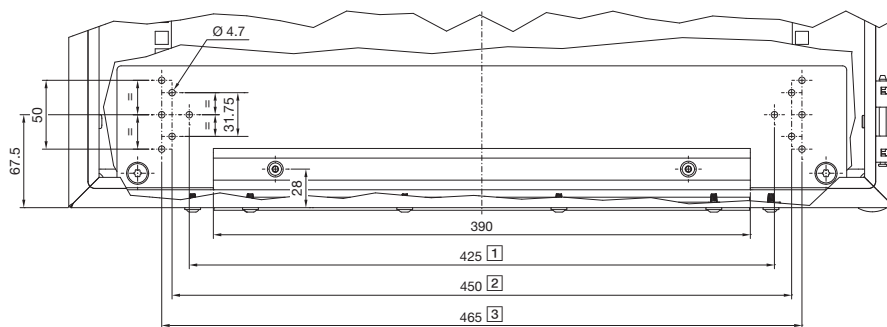
with 482.6 mm (19") mounting angles, depth-variable



Section B – B



Detail X

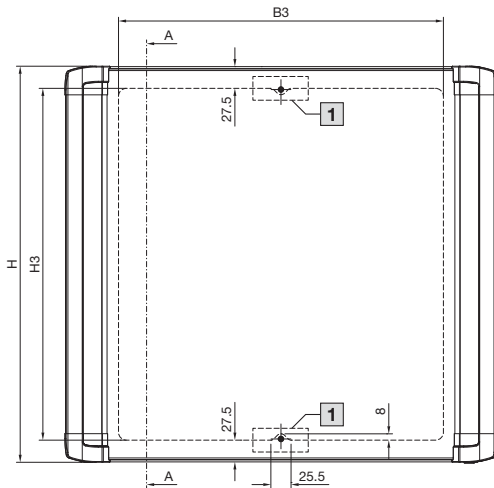


- 1 For earth rail
DK 7113.000
- 2 For 482.6 mm (19") socket strip, 1 U
DK 7240.XXX
- 3 For 482.6 mm (19") socket strip, 2 U
DK 7000.630

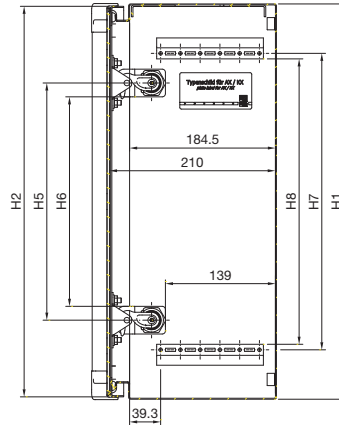
Model No. AX IT	Height dimensions mm							Depth dimensions mm		
	U	H1	H2	H3	H4	H5	H6	T1	T2	T2
7641.350	7	380	374	336	333	255	340	350	327.5	278
7643.350	12	600	594	556	553	475	560	350	327.5	278
7645.350	16	760	754	716	711	635	720	350	327.5	278
7646.400	16	800	794	756	711	650	760	400	377.5	316

Command panel AX

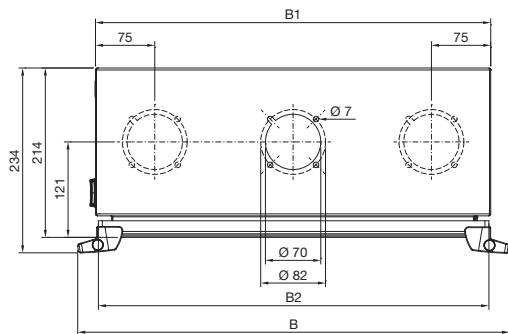
with handle strips, service access from the front



Section A – A



1 Not applicable to AX 6315.150



Enclosure

B = Overall width with handle strips

B1 = Enclosure width

B2 = Door width

B3 = Maximum usable mounting space in the width

H = Overall height with handle strips

H1 = Enclosure height

H2 = Door height

H3 = Maximum usable mounting space in the height

H5 = Lock spacing

H6 = Clearance height between positioning brackets

H7 = Mounting distance between mounting brackets

H8 = Clearance height between mounting brackets

Model No. AX	Width dimensions mm				Height dimensions mm							
	B	B1	B2	B3	H	H1	H2	H3	H5	H6	H7	H8
6315.150	345	300	294	211	301	300	294	245	–	–	175	161
6315.250	425	380	374	291	301	300	294	245	–	–	175	161
6315.350	425	380	374	291	381	380	374	325	–	–	275	261
6315.450	545	500	494	411	501	500	494	445	300	265	375	361
6315.650	645	600	594	511	601	600	594	545	400	365	475	461

Compact enclosures

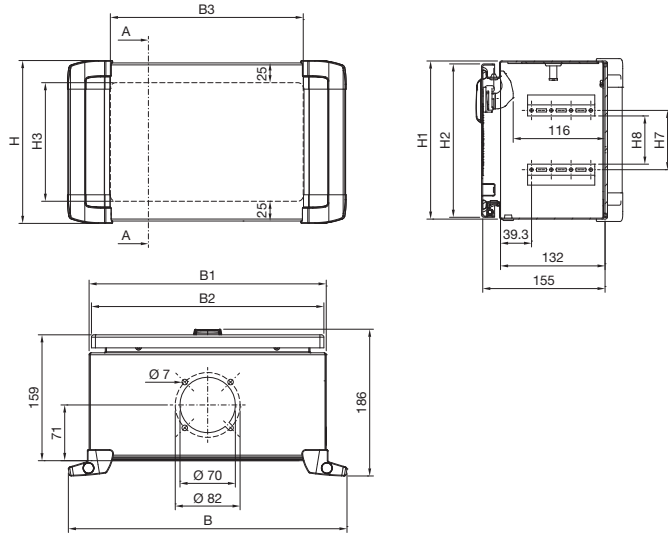
Compact enclosures AX

Command panel AX

with handle strips, service access from the rear

AX 6320.050

Section A – A



Enclosure

B = Overall width with handle strips

B1 = Enclosure width

B2 = Door width

B3 = Maximum usable mounting space in the width

H = Overall height with handle strips

H1 = Enclosure height

H2 = Door height

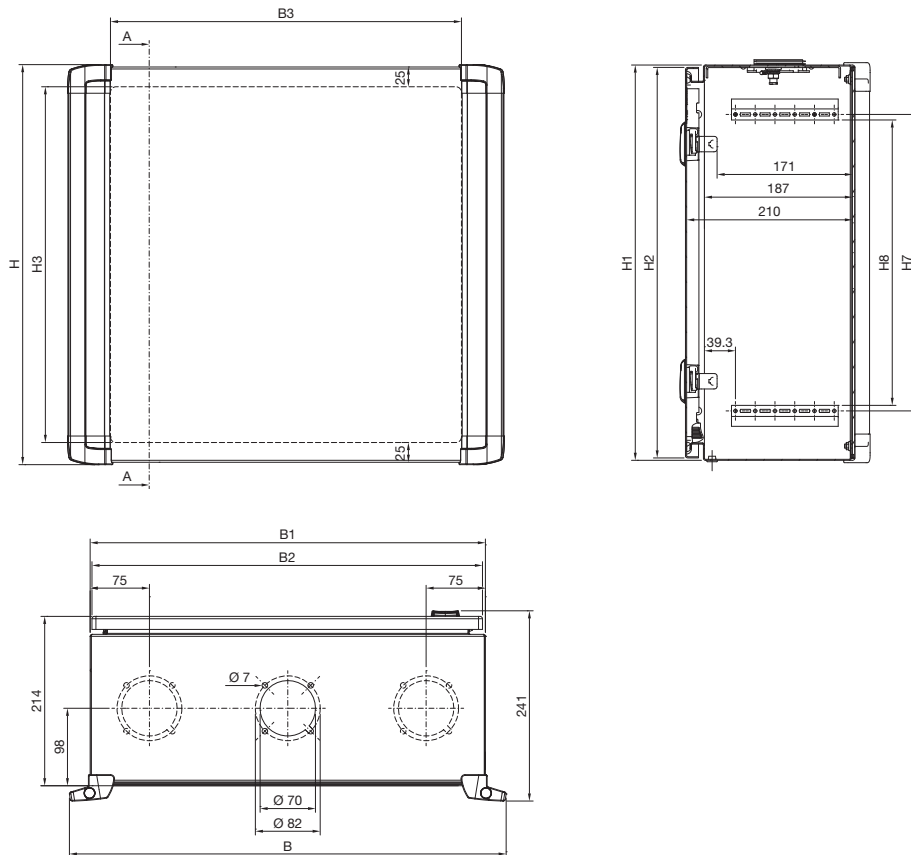
H3 = Maximum usable mounting space in the height

H7 = Mounting distance between mounting brackets

H8 = Clearance height between mounting brackets

AX 6320.350, AX 6320.450, AX 6320.550, AX 6320.650

Section A – A

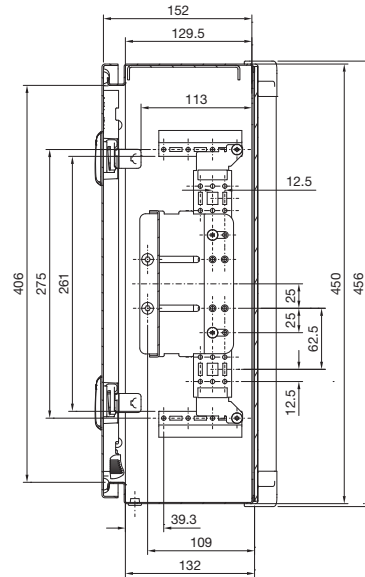
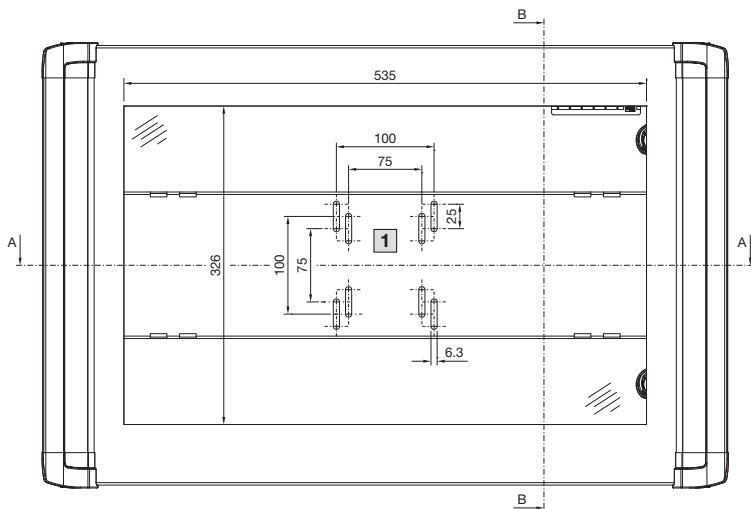


Model No. AX	Width dimensions mm				Height dimensions mm					
	B	B1	B2	B3	H	H1	H2	H3	H7	H8
6320.050	352.5	300	294	244	206	200	194	150	75	61
6320.350	432.5	380	374	324	386	380	374	330	275	261
6320.450	552.5	500	494	444	506	500	494	450	375	361
6320.550	652.5	600	594	544	386	380	374	330	275	261
6320.650	652.5	600	594	544	606	600	594	550	475	461

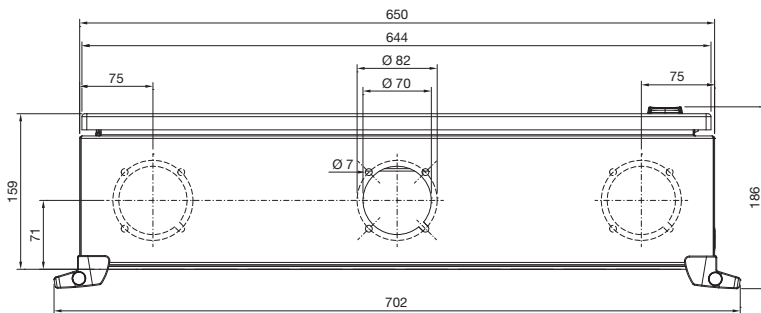
Command panel AX for desktop TFT up to 24"

AX 6321.050

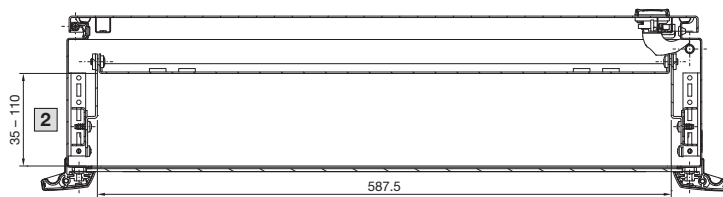
Section B – B



1 Monitor infinitely adjustable in the height



Section A – A



2 Monitor infinitely adjustable in the depth

Rittal – The System.

Faster – better – everywhere.

- Enclosures
- Power Distribution
- Climate Control
- IT Infrastructure
- Software & Services

You can find the contact details of all Rittal companies throughout the world here.



www.rittal.com/contact

XWWW00195EN1907

ENCLOSURES

POWER DISTRIBUTION

CLIMATE CONTROL

IT INFRASTRUCTURE

SOFTWARE & SERVICES



FRIEDHELM LOH GROUP